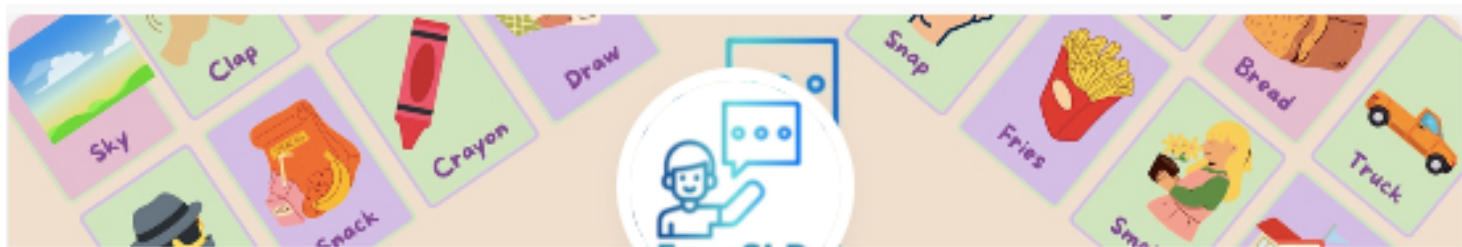


If you're able to, your support would be greatly appreciated. Click the link or picture below to help support us!

Support us



Support Free SLP

One time

↻ Monthly

\$ 5

Your name or nickname

Your message

Donate



Thank you for downloading our materials!
We hope they make your sessions an
easier and more enjoyable experience.

[Click to see our favorite Amazon finds](#)

**If you would like to see some our
favorite finds from Amazon that we
love to incorporate into our therapy
sessions, click the link above!**

**Other games and materials that we
love can be found in the favorites
section of our website listed below.**

[Our Recommended games and materials](#)

Step 1

Print and laminate your cards.

Pro tip:

Laminate **before** you punch your holes, or else you will have to punch holes twice



[Our favorite laminators](#)



[Our favorite printers](#)

Step 2

Punch a hole in the top left corner of the cards. Use binder clips to easily flip thru the cards and keep them together!



[Binder Rings](#)

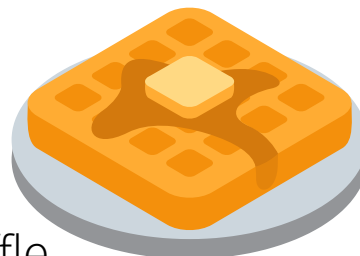


W Wolf

P a hungry **w**olf

S The **w**olf let me pet him.

TT The **w**olf found a **w**orm in the **w**ood **w**hen he was looking for his friend **W**illy.



W Waffle

P butter **w**affle

S **W**affles are my favorite.

TT The **w**itch made me **w**affles with **w**alnuts and spider**w**ebs on **w**ednesday.



W Walrus

P loud **w**alrus

S The **w**alrus stole my ball!

TT The **w**alrus asked the **w**izard **w**hy there **w**ere **w**atermelons in the **w**ater.

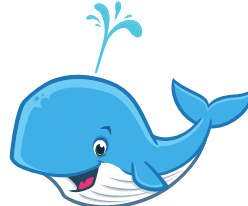


W Wizard

P magical **w**izard

S The **w**izard cast a spell on

me
TT **W**ill the **w**izard **w**ave his **w**and and make my hom**w**ork disappear?



W Whale

P big blue **w**hale

S The **w**hale loves to sleep.

TT The **w**hale **w**on an **a**ward at **w**ork for **w**orst hide and go seek player.

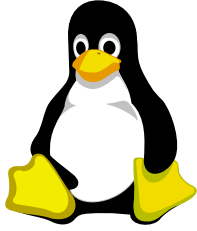


W Wagon

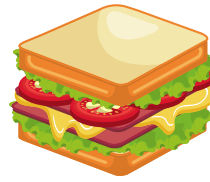
P red **w**agon

S I put my dog in the **w**agon.

TT For Hallow**w**een, i had to put my ki**w**is, **w**affles, and **f**low**w**ers into a **w**agon.



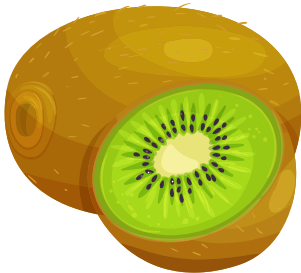
- W Penguin
- P squeaky penguin
- S The penguin ate a fish.
- TT The penguin asked his **w**aiter for a sandwich with extra **w**orms and **w**ater.



- W Sandwich
- P slimy sandwich
- S I made myself a sandwich.
- TT The **w**hale **w**agged his tail **w**hen his **w**ife said that she was making him a sandwich



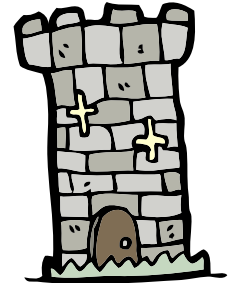
- W Flower
- P blooming flower
- S My fish ate a flower.
- TT An owl **w**atched a **w**asp land on my **w**hite flower.



- W Kiwi
- P juicy kiwi
- S Kiwis are the best fruit!
- TT The **w**itch gave the **w**hale a kiwi that turned into a **w**orm **w**hen it touched the **w**ater.



- W Shower
- P a **w**arm shower
- S My elephant needs a shower.
- TT I put my homework in the shower and **w**atched it grow into seaweed last **w**eek.



- W Tower
- P a leaning tower
- S The dragon lives in a tower.
- TT A **w**olf **w**ith **w**ings from another **w**orld lives in a giant tower.